



FPC-42

HEAVY DUTY FINGERPRINT
WARDROBE LOCK

USE CASE

Swing Wardrobe Doors

Large Cabinet Doors in Offices

Double Swing Doors



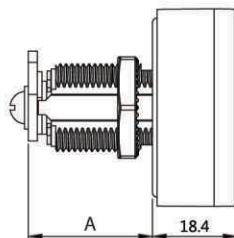
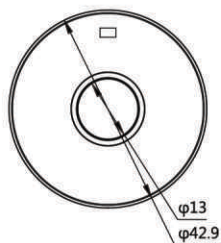
TECHNICAL SPECIFICATION

Fingerprint device	Semiconductor fingerprint reader	Management fingerprint	2
Working temperature	-20~+55°C	User fingerprint	8
Working humidity	10% ~ 85%	Static current	20uA
Storage temperature	-40 ~ +55°C	Dynamic current	30mA
Power supply	Cr2450	Batteries life time	1 year

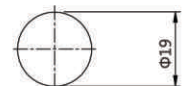
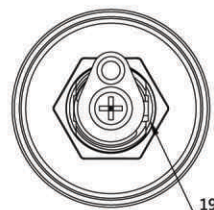
FEATURES

- High performance fingerprint sensor
- Heavy Duty sturdy Zinc alloy Lock
- Manual turn to lock/unclock saves battery
- Long Cam for firm locking
- CR 2450 external battery.
- Approx 3000 operations with single battery
- Low battery warning
- Easy installation by any carpenter.

DIMENSIONS



A=20/30mm



Fixing Hole Size