



FIGERPRINT CABINET LOCK

F-053

Overview	2
FEATURES	2
1.Unlocking Modes.....	2
Automatic Mode	2
1. How to unlock.....	2
2. How to delete.....	3
3. How to lock	3
4. How to unlock.....	4
5. Other functions.....	5

6. Tuaya Bluetooth version.....	5
7. Installation Instructions.....	5

Overview

The F-053 can be used for locking drawers and cabinets.

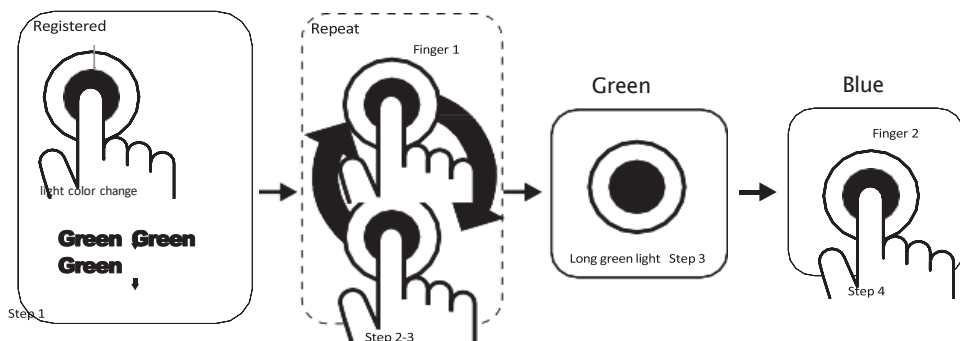
Feature

- 1. Biometric sensor, highly sensitive and rapid response**
- 2. Max 20 fingerprints can be added**
- 3. E-Key for emergency and management**
- 4. Material: Zinc-alloy, automatic locking system**
- 5. Surface mounted, widely used in drawer, cabinet, wardrobe etc.**

Automatic Mode

1. How to add new fingerprints:

- Put a registered finger on sensor, after green light the latch retracts, keep on holding, remove after green light is on
- Blue light, put a finger on, remove after green light
- Put the finger on, green light then remove; repeat until a long green light for 2 seconds (The fingerprint is registered)
- Blue light, add more new fingerprints.



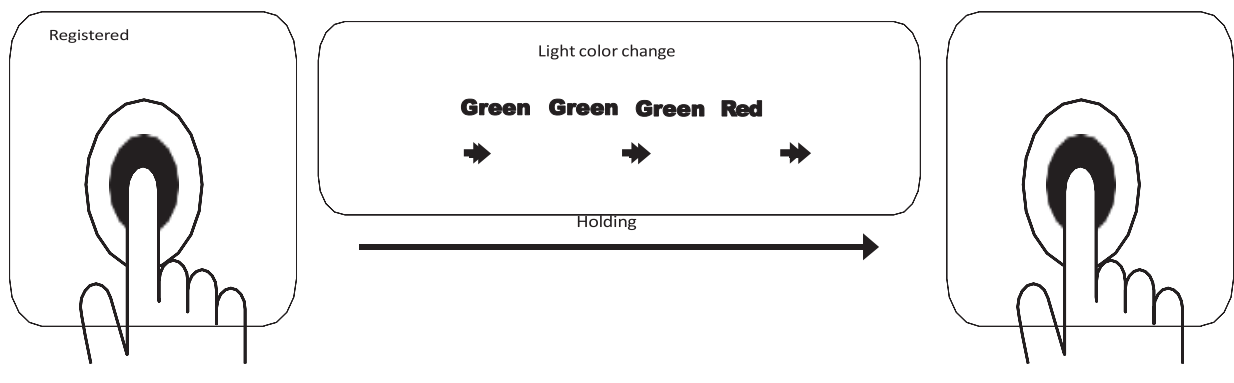
Note

- 1). Make sure to add a fingerprint before using. Any finger can unlock in the factory setting
- 2) In order to keep the lock in good working condition , add no less than 3 fingerprints

2. How to delete fingerprints

→Put any registered finger on sensor, green light, holding, green light again, keep holding, green light then red light flashed, then remove

→green light for 2 seconds, all the fingerprints deleted.



3. How to lock

- Push the door closed, door lock automatically

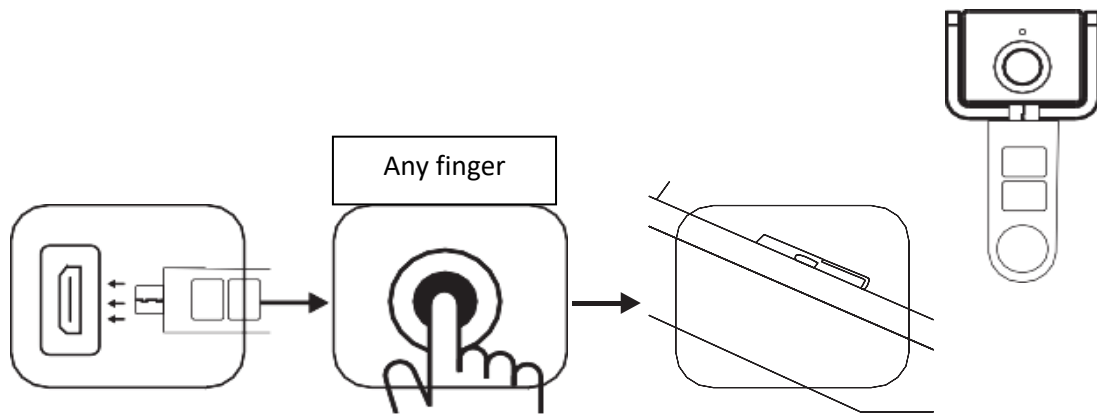
4. How to unlock

- Put any registered fingerprint on sensor
- Green light, unlocked
- Pull the door open

Other Function

E-KEY

1. Insert E-Key
2. Put any sensor on finger, green light on , unlocked .
3. Pull the door open.



Low battery warning:

In case of low battery, put the registered fingerprint, green light flashes once, and red light flashes thrice, then a long green light, then it will be unlocked. Change the battery immediately after door open

Note: Use 3XAAA alkaline battery, do not use Carbon battery

Outer Power Supply

When low battery, can connect power bank or mobile plug for outer power supply.

After unlocked, change the battery immediately.

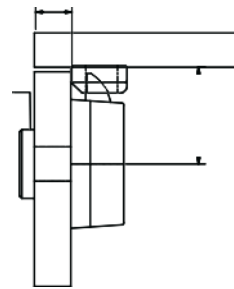
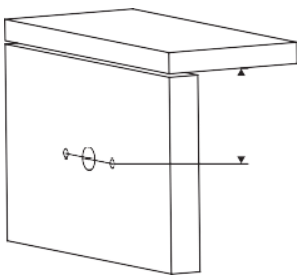


5. TUYA app bluetooth version

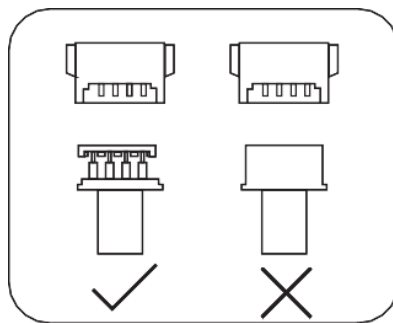
- Please open the TUYA App for details.

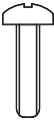
Installation Instructions

1. Put the installation drawing on the door, approx 45mm between the door frame and centre hole (Picture 1), then drill the hole

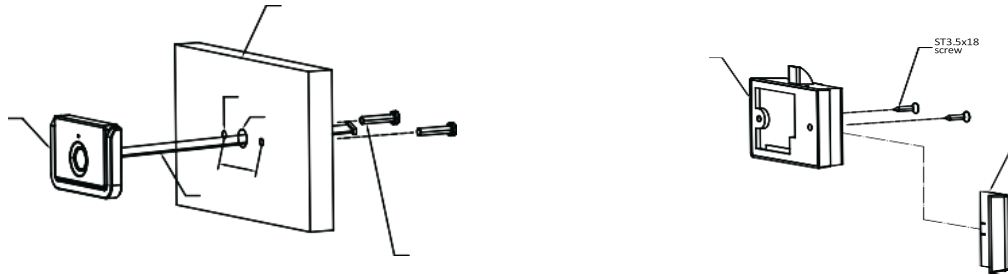


wire connection

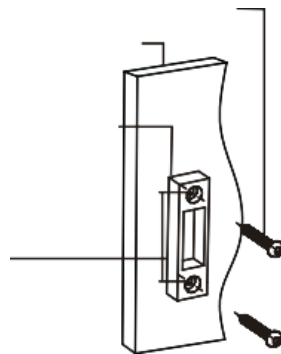


	Door Thickness (mm)		Screw
	1	14mm~16mm	M4X20
	2	16mm~18mm	M4X22
	3	19mm~21mm	M4X25

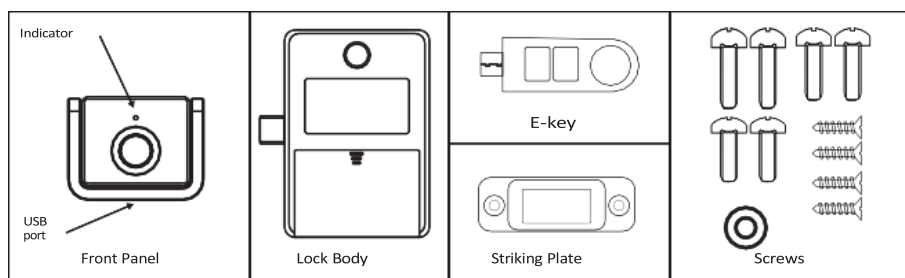
2. Wire goes through the center hole and fix the front panel by screw M4X22, then connect the back lock, (Tide up the wire not crush), fix back lock by crew ST3.5X18



3. Fix the striking plate by screw ST3.5X18 (Make sure latch works well)

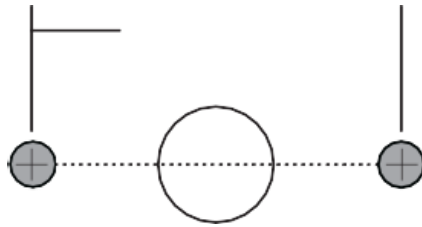


COMPONENT



INSTALLATION DRAWING

⊕ Screw



Follow the drawing to drill the hole